



AD-200 2-Way Tilt

MAXIMUM CAPACITY (DRY WEIGHT)		200 lb	90.9 kg	
TUMBLER DIAMETER		62-1/2"	158.75 cm	
TUMBLER DEPTH		42"	106.7 cm	
TUMBLER VOLUME		74.5 cu ft	2,109.60 L	
TUMBLER / DRIVE MOTOR		3 hp	2.24 kW	
DOOR OPENING (DIAMETER) *		36-3/4" w x 43" h	93.3 cm x 109.2 cm	
DOOR SILL HEIGHT – LEVEL		37-1/4"	94.6 cm	
COMPRESSED AIR VOLUME		9 cfm	0.25 cmh	
COMPRESSED AIR CONNECTION **		3/8" F.N.P.T.		
EXHAUST CONNECTION (DIAMETER)		20"	50.8 cm	
WATER CONNECTION ***		3/4" F.N.P.T.		
Gas	VOLTAGE AVAILABLE	208-575V 3ø 3,4w 50/60 Hz		
	BLOWER / FAN MOTOR (REAR / SIDE EXHAUST)	7-1/2 hp / 15 hp	5.6 kW / 11.2 kW	
	APPROXIMATE NET WEIGHT	3,370 lb	1,529 kg	
	APPROXIMATE SHIPPING WEIGHT	3,670 lb	1,664 kg	
	HEAT INPUT	650,000 Btu/hr	163,810 kcal/hr	
	AIRFLOW	60 Hz	5,300 cfm	150.08 cmm
		50 Hz	4,417 cfm	125.07 cmm
INLET PIPE CONNECTION		1-1/2" F.N.P.T.		
Steam	VOLTAGE AVAILABLE	208-575V 3ø 3,4w 50/60 Hz		
	BLOWER / FAN MOTOR	15 hp	11.2 kW	
	APPROXIMATE NET WEIGHT	3,625 lb	1,644 kg	
	APPROXIMATE SHIPPING WEIGHT	3,925 lb	1,780 kg	
	AIRFLOW	60 Hz	6,500 cfm	184.06 cmm
		50 Hz	5,417 cfm	153.38 cmm
	STEAM CONSUMPTION	890 lb/hr	404.5 kg/hr	
	OPERATING STEAM PRESSURE	125 psi max	8.6 bar	
	BOILER HORSEPOWER (NORMAL LOAD)	27 Bhp		
	SUPPLY CONNECTION	1-1/2" M.N.P.T.		
RETURN CONNECTION	3/4" M.N.P.T.			

Shaded areas are stated in metric equivalents

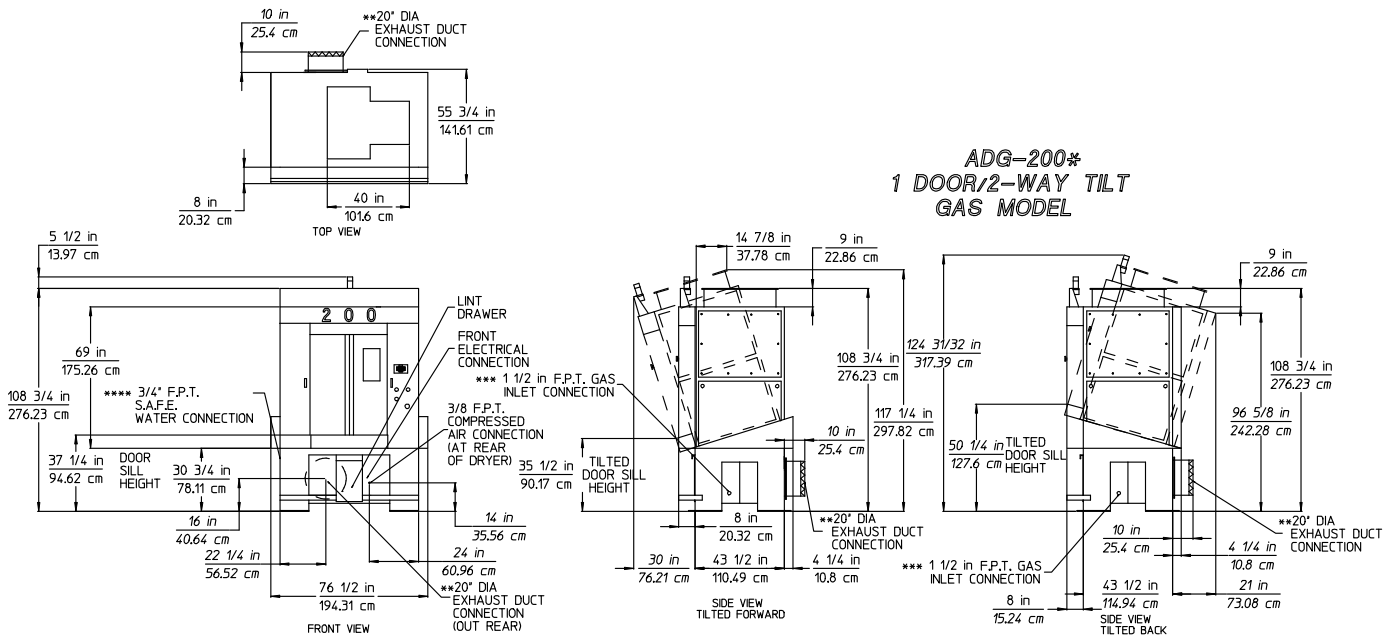
07/16/03

* Dryer must be provided with clean, dry and regulated 80 psi +/- 10 psi (5.51 bar +/- 0.69 bar) air supply.

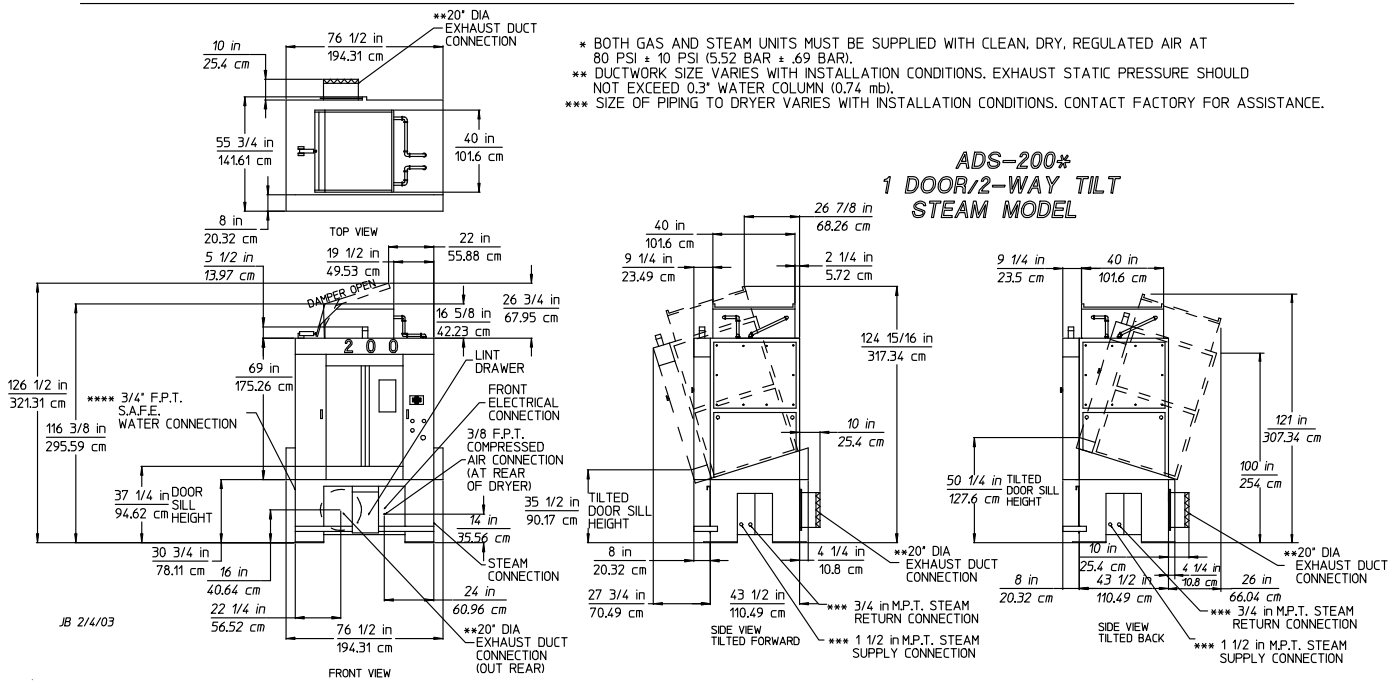
** Height is 43-inches (109.22 cm) maximum at the center of the door.

*** Water supply must be 40 psi +/- 20 psi (2.75 bar +/- 1.37 bar) for fire suppression system to operate properly.

AD-200 2-Way Tilt



* BOTH GAS AND STEAM UNITS MUST BE SUPPLIED WITH CLEAN, DRY, REGULATED AIR AT 80 PSI ± 10 PSI (5.52 BAR ± .69 BAR).
 ** DUCTWORK SIZE VARIES WITH INSTALLATION CONDITIONS. EXHAUST STATIC PRESSURE SHOULD NOT EXCEED 0.3" WATER COLUMN (0.74 mb).
 *** SIZE OF PIPING TO DRYER VARIES WITH INSTALLATION CONDITIONS. CONTACT FACTORY FOR ASSISTANCE.



88 Currant Road • Fall River, MA 02720
 Tel. 508-678-9000 • Fax 508-678-9447
 sales@amdry.com • www.amdry.com