



## AD-200\_Non-Tilt

MAXIMUM CAPACITY (DRY WEIGHT)		200 lb	<b>90.72 kg</b>	
TUMBLER DIAMETER		62-1/2"	<b>158.75 cm</b>	
TUMBLER DEPTH		42"	<b>106.68 cm</b>	
TUMBLER VOLUME		74.5 cu ft	<b>2109.60 L</b>	
TUMBLER/DRIVE MOTOR		3 hp	<b>2.24 kW</b>	
BLOWER/FAN MOTOR (GAS / STEAM)		7-1/2 hp / 15 hp	<b>5.6 kW / 11.2 kW</b>	
DOOR OPENING (DIAMETER)*		36-3/4" w x 43" h	<b>93.3 cm w x 109.2 cm h</b>	
DOOR SILL HEIGHT		36-1/2"	<b>92.71 cm</b>	
WATER CONNECTION**		3/4" F.N.P.T.		
<b>Gas</b>	VOLTAGE AVAILABLE		208-575V 3 $\phi$ 3,4w 50/60 Hz	
	APPROX. NET WEIGHT		3,370 lb <b>1,528.61 kg</b>	
	APPROX. SHIPPING WEIGHT		4,127 lb <b>1,871.98 kg</b>	
	AIRFLOW		5,300 cfm <b>150.08 cmm</b>	
	HEAT INPUT		650,000 Btu/hr <b>163,797 kcal/hr</b>	
	EXHAUST CONNECTION (DIAMETER)		20" <b>50.80 cm</b>	
	COMPRESSED AIR CONNECTION***		1/8" F.N.P.T.	
	COMPRESSED AIR VOLUME		3.25 cfh <b>0.09 cmh</b>	
	INLET PIPE CONNECTION		1-1/2" F.N.P.T.	
<b>Electric</b>	VOLTAGE AVAILABLE		N / A	
	APPROX. NET WEIGHT			
	APPROX. SHIPPING WEIGHT			
	AIRFLOW			
	EXHAUST CONNECTION (DIAMETER)			
	COMPRESSED AIR CONNECTION			
	COMPRESSED AIR VOLUME			
	OVEN SIZE			
	kW	Btu/hr	kcal/hr	
<b>Steam</b>	VOLTAGE AVAILABLE		208-575V 3 $\phi$ 3,4w 50/60 Hz	
	APPROX. NET WEIGHT		3,625 lb <b>1,644.27 kg</b>	
	APPROX. SHIPPING WEIGHT		3,891 lb <b>1,764.93 kg</b>	
	AIRFLOW		6,500 cfm <b>184.06 cmm</b>	
	STEAM CONSUMPTION		890 lb/hr <b>403.70 kg/hr</b>	
	OPERATING STEAM PRESSURE		125 psi max <b>8.62 bar</b>	
	EXHAUST CONNECTION (DIAMETER)		20" <b>50.80 cm</b>	
	COMPRESSED AIR CONNECTION***		1/8" F.N.P.T.	
	COMPRESSED AIR VOLUME		3.25 cfh <b>0.09 cmh</b>	
	BOILER HP (NORMAL LOAD)		27 Bhp	
	SUPPLY CONNECTION		2" M.N.P.T.	
	RETURN CONNECTION		2" M.N.P.T.	

Shaded areas are stated in metric equivalents

EV 11/11/04

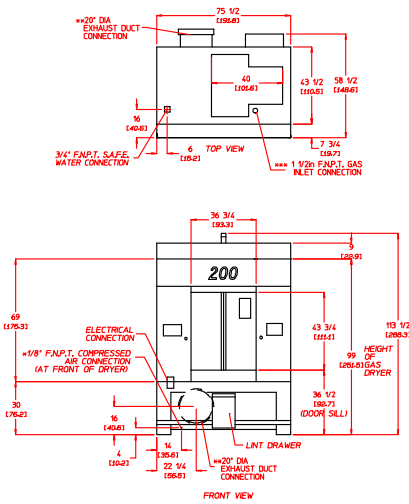
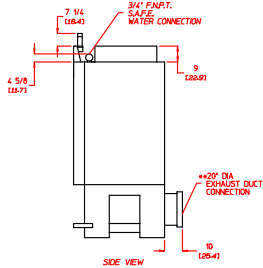
\* Dryer must be provided with clean, dry and regulated 80 psi +/- 10 psi (5.51 bar +/- 0.69 bar) air supply.

\*\* Water supply must be 40 psi +/- 20 psi (2.75 bar +/- 1.37 bar) for fire suppression system to operate properly.

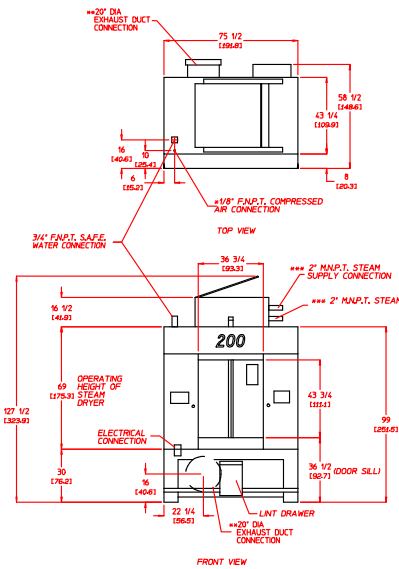
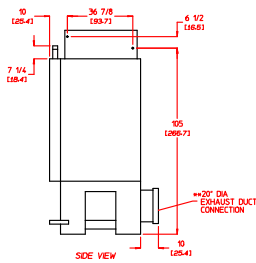
\*\*\* Height is 43-inches (109.22 cm) maximum at the center of the door.

• BOTH GAS AND STEAM UNITS MUST BE SUPPLIED WITH CLEAN, DRY REGULATED AIR AT 80 PSI ± 10 PSI (5.52 BAR ± 0.69 BAR)  
 •• DUCTWORK SIZE VARIES WITH INSTALLATION CONDITIONS EXHAUST STATE PRESSURE SHOULD NOT EXCEED 0.3" WATER COLUMN (0.74 inHg)  
 ••• SIZE OF PIPING TO DRYER VARIES WITH INSTALLATION CONDITIONS, CONTACT FACTORY FOR ASSISTANCE.

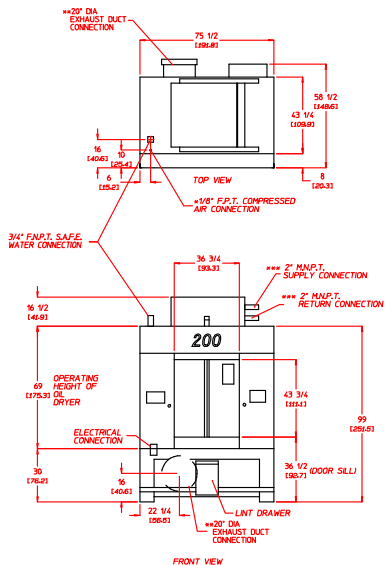
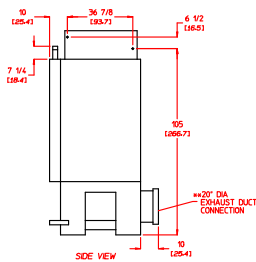
## AD-200\* NON-TILT GAS MODEL



## AD-200\* NON-TILT STEAM MODEL



## AD-200\* NON-TILT THERMAL OIL MODEL



EV 7/26/04



88 Currant Road • Fall River, MA 02720  
 Tel. 508-678-9000 • Fax 508-678-9447  
 sales@amdry.com • www.amdry.com