



AD-670 (GAS)

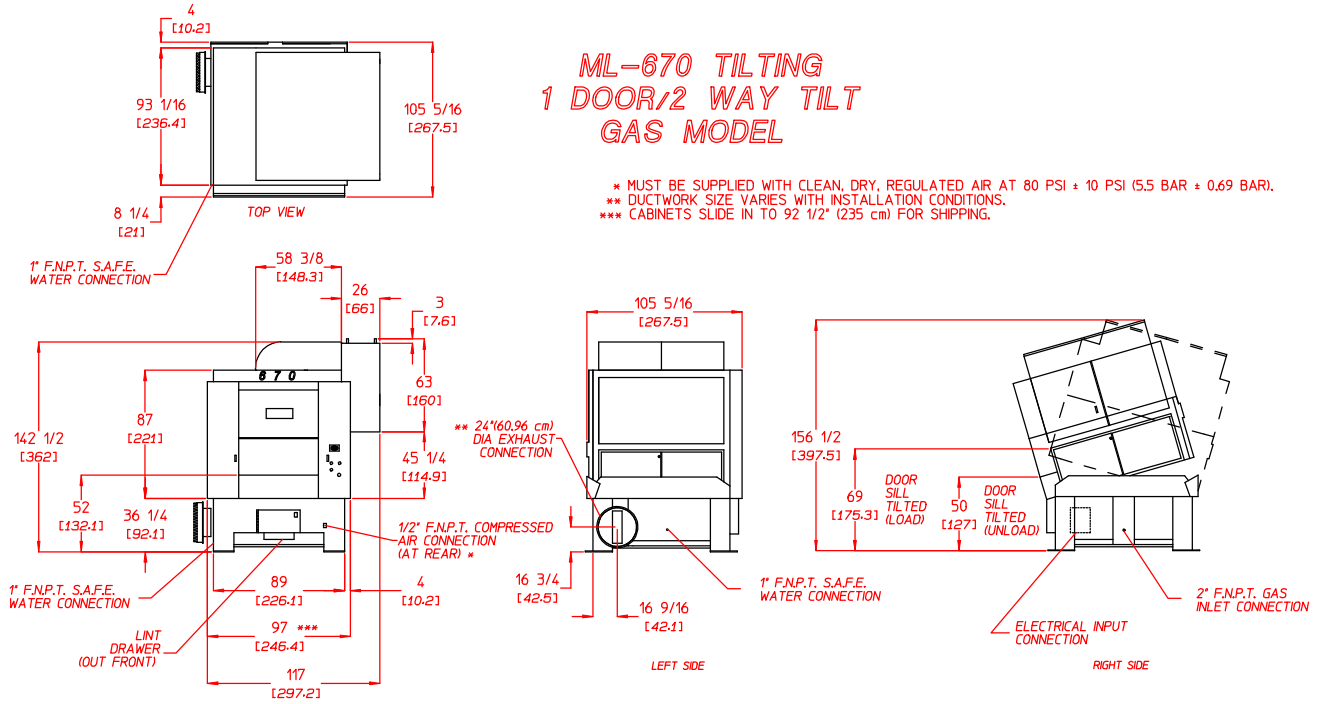
MAXIMUM CAPACITY (DRY WEIGHT)		670 lb	303.91 kg
MINIMUM LOAD SIZE		442 lb	200.49 kg
TUMBLER DIAMETER		78-1/4"	198.76 cm
TUMBLER DEPTH		92"	233.68 cm
TUMBLER VOLUME		256 cu ft	7249.113 L
DOOR OPENING (WIDTH X HEIGHT)		66-3/8" x 56-1/16"	168.59 cm x 142.39 cm
DOOR SILL HEIGHT, LEVEL		52"	132.08 cm
DOOR SILL HEIGHT, REAR TILT		69"	175.26 cm
DOOR SILL HEIGHT, FRONT TILT		50"	127 cm
CABINET OPERATING DEPTH, LEVEL (1 DOOR/2 DOOR)		105-5/16" / 109-9/16"	267.49 cm / 278.28 cm
CABINET WIDTH		114-3/4"	291.47 cm
REAR TILT		13°	
FRONT TILT		13°	
WATER CONNECTION		1" F.N.P.T.	
Gas	CABINET REAR TILT HEIGHT	156-1/2"	397.51 cm
	CABINET OPERATING HEIGHT, LEVEL	142-1/2"	361.95 cm
	CABINET FULL TILT DEPTH	157"	398.78 cm
	APPROX. NET WEIGHT	11,200 lb	5,080.23 kg
	APPROX. SHIPPING WEIGHT	11,350 lb	5,148.27 kg
	VOLTAGE AVAILABLE	208-480v 3ø 3,4w 50/60 Hz	
	TUMBLER/DRIVE MOTOR	5 hp	3.73 kW
	BLOWER/FAN MOTOR	25 hp	18.64 kW
	BURNER BLOWER MOTOR	N / A	
	BURNER TYPE	Hi / Lo	
	HEAT INPUT	2,200,000 Btu/hr	554,391 kcal/hr
	INLET PIPE CONNECTION (NON-TILT/TILT)	2" F.N.P.T.	
	MAXIMUM GAS PRESSURE	12 in WC	29.89 mb
	AIRFLOW	13,000 cfm	368.12 cmm
	MAXIMUM EXHAUST BACK PRESSURE	1 in WC	2.49 mb
	EXHAUST DIAMATER	24"	60.96 cm
	COMPRESSED AIR PRESSURE	80 psi (± 10 psi)	5.52 bar (± 0.69 bar)
	COMPRESSED AIR VOLUME (1-WAY/2-WAY TILT)	15 cfh / 19 cfh	0.42 cmh / 0.54 cmh
COMPRESSED AIR CONNECTION (NON-TILT/TILT)	1/2" F.N.P.T.		
Steam	CABINET REAR TILT HEIGHT		
	CABINET OPERATING HEIGHT, LEVEL		
	CABINET FULL TILT DEPTH		
	APPROX. NET WEIGHT		
	APPROX. SHIPPING WEIGHT		
	VOLTAGE AVAILABLE		
	TUMBLER/DRIVE MOTOR		
	BLOWER/FAN MOTOR		
	BOILER HORSEPOWER (NORMAL LOAD)	N / A	
	SUPPLY CONNECTION		
	RETURN CONNECTION (NON-TILT/TILT)		
	STEAM CONSUMPTION		
	AIRFLOW		
	MAXIMUM EXHAUST BACK PRESSURE		
	EXHAUST DIAMETER		
COMPRESSED AIR PRESSURE			
COMPRESSED AIR VOLUME (1-WAY/2-WAY TILT)			
COMPRESSED AIR CONNECTION (NON-TILT/TILT)			

Shaded areas are stated in metric equivalents

EV 9/27/04

ML-670 TILTING 1 DOOR/2 WAY TILT GAS MODEL

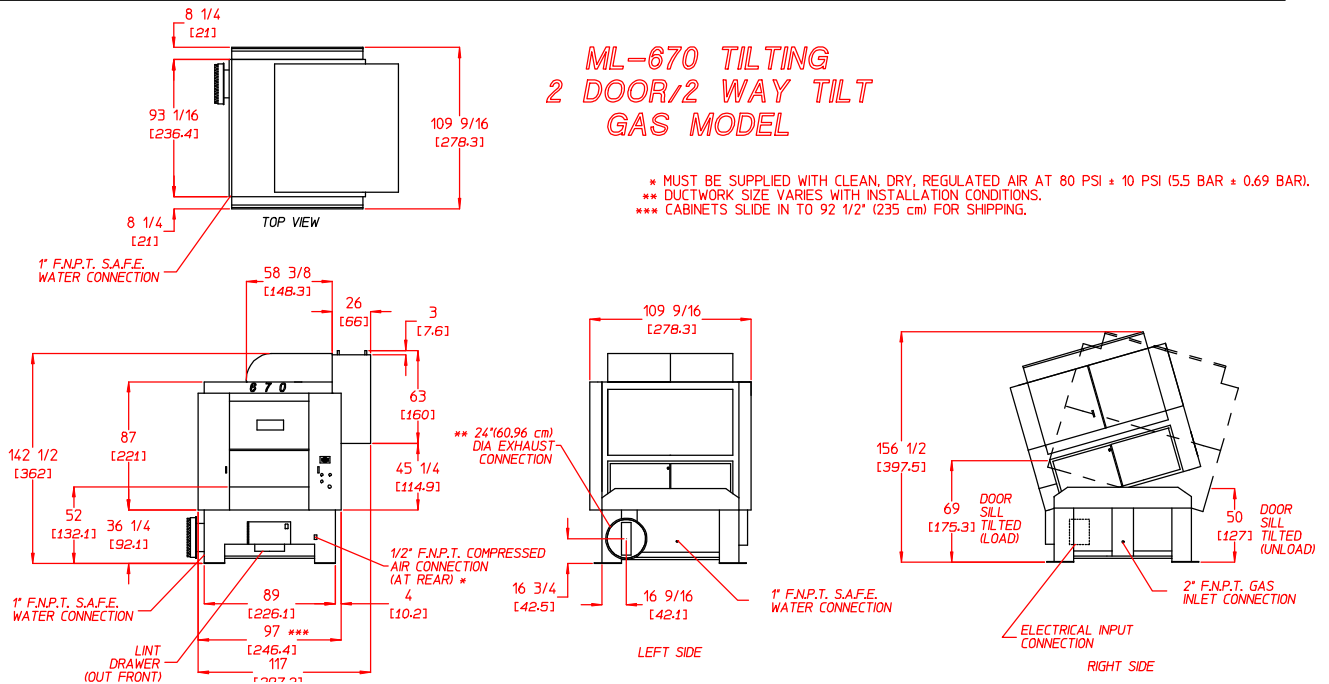
* MUST BE SUPPLIED WITH CLEAN, DRY, REGULATED AIR AT 80 PSI ± 10 PSI (5.5 BAR ± 0.69 BAR).
 ** DUCTWORK SIZE VARIES WITH INSTALLATION CONDITIONS.
 *** CABINETS SLIDE IN TO 92 1/2" (235 cm) FOR SHIPPING.



DX 4/17/06

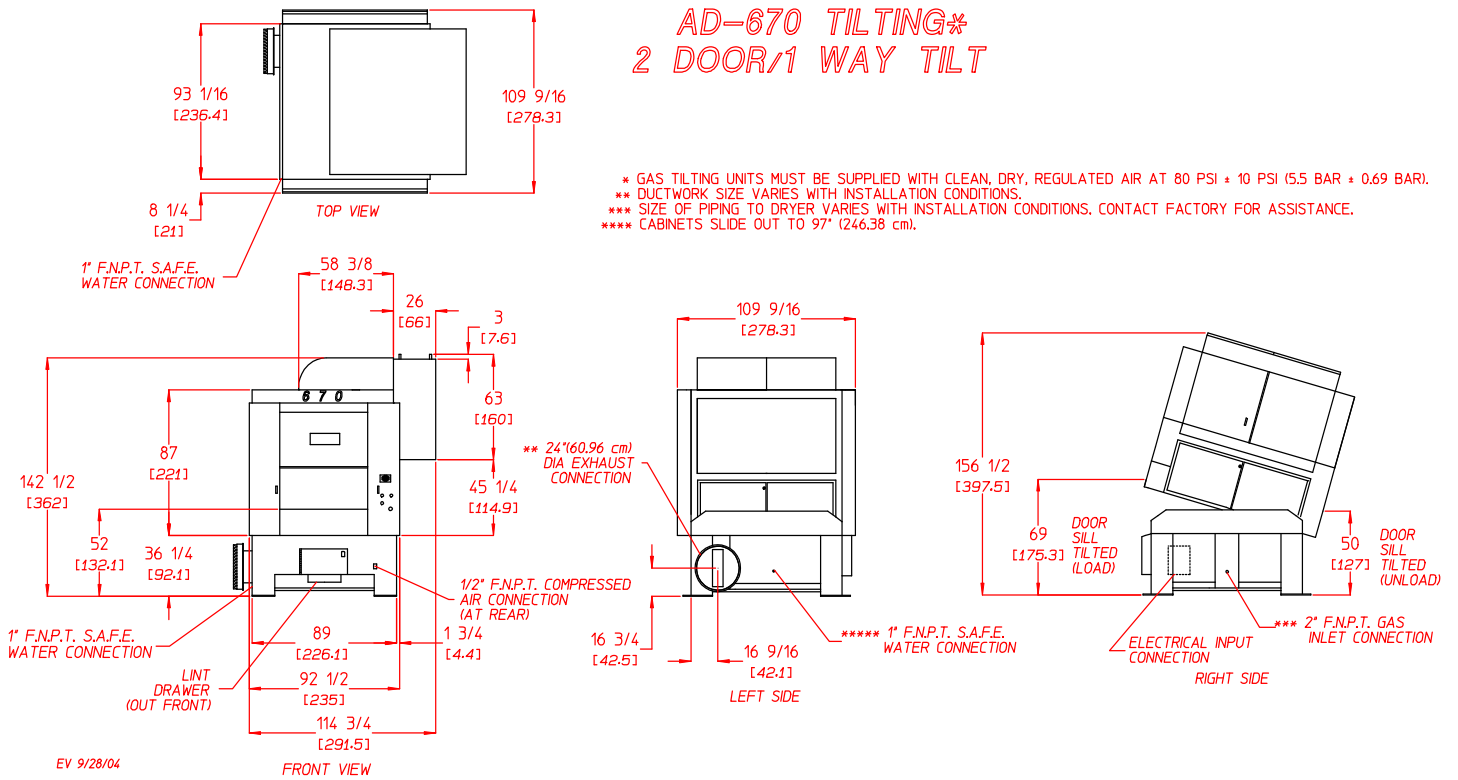
ML-670 TILTING 2 DOOR/2 WAY TILT GAS MODEL

* MUST BE SUPPLIED WITH CLEAN, DRY, REGULATED AIR AT 80 PSI ± 10 PSI (5.5 BAR ± 0.69 BAR).
 ** DUCTWORK SIZE VARIES WITH INSTALLATION CONDITIONS.
 *** CABINETS SLIDE IN TO 92 1/2" (235 cm) FOR SHIPPING.



AD-670 TILTING* 2 DOOR/1 WAY TILT

* GAS TILTING UNITS MUST BE SUPPLIED WITH CLEAN, DRY, REGULATED AIR AT 80 PSI ± 10 PSI (5.5 BAR ± 0.69 BAR).
 ** DUCTWORK SIZE VARIES WITH INSTALLATION CONDITIONS.
 *** SIZE OF PIPING TO DRYER VARIES WITH INSTALLATION CONDITIONS. CONTACT FACTORY FOR ASSISTANCE.
 **** CABINETS SLIDE OUT TO 97" (246.38 cm).





88 Currant Road • Fall River, MA 02720
Tel. 508-678-9000 • Fax 508-678-9447
sales@amdry.com • www.amdry.com