



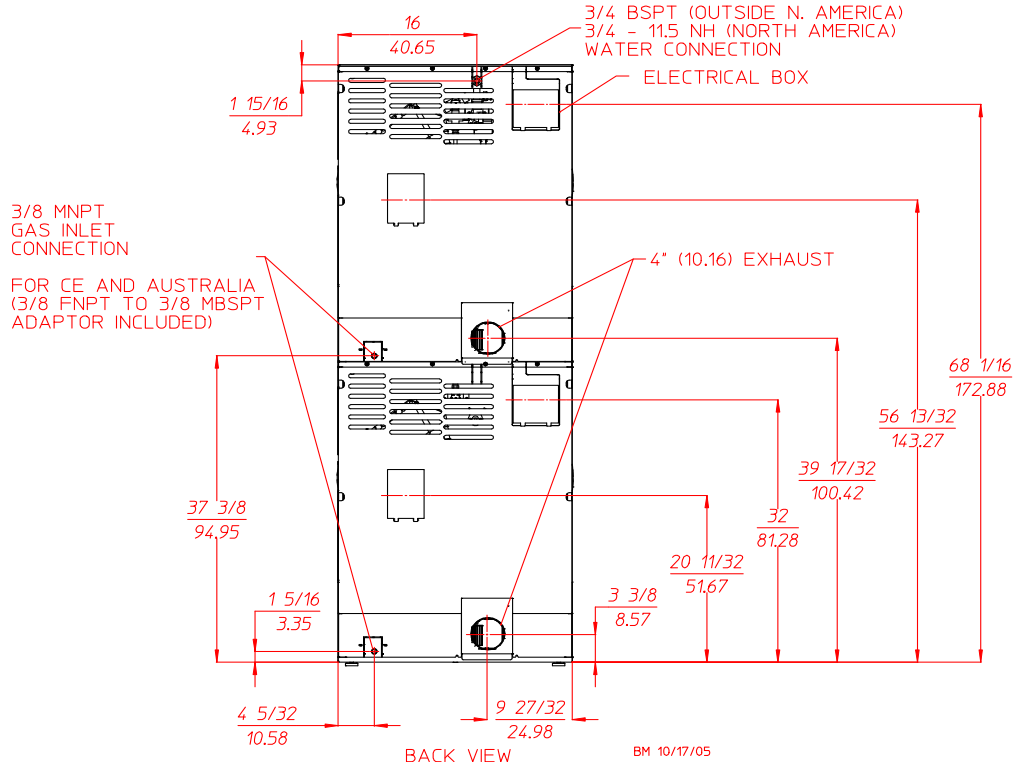
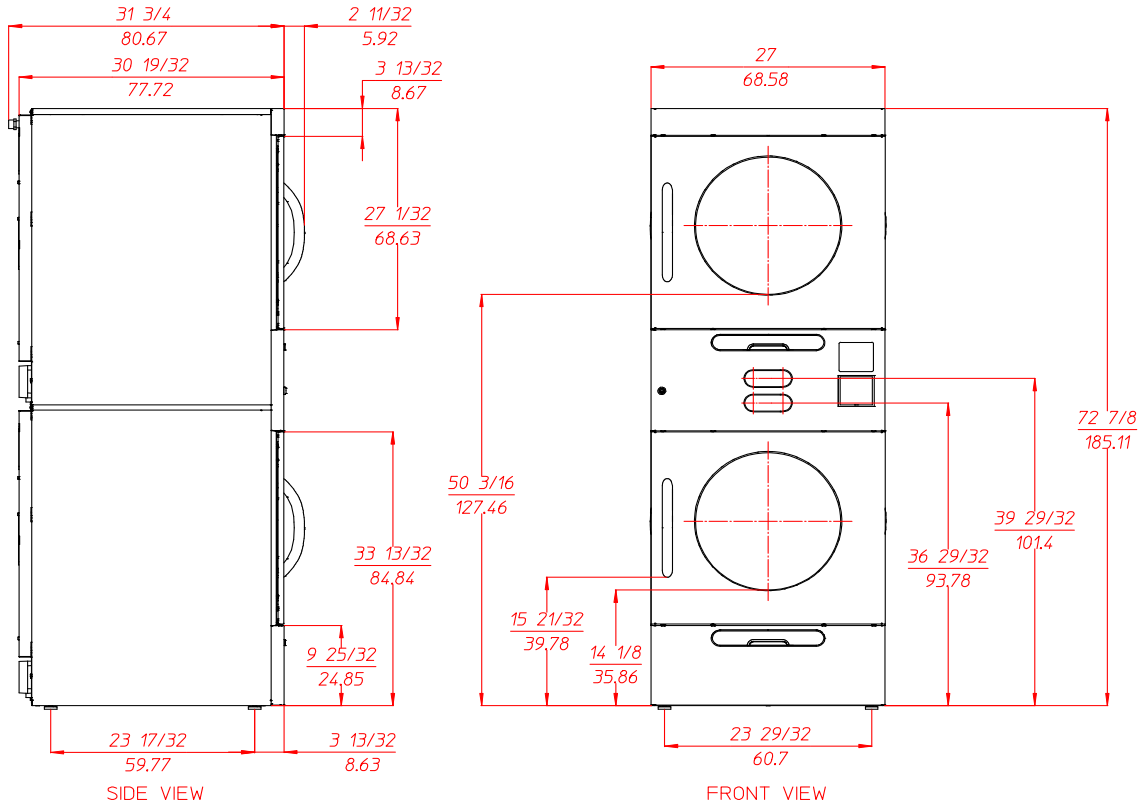
SL2020 T20stack

MAXIMUM CAPACITY (DRY WEIGHT) PER POCKET		20 lb	9.07 kg	
TUMBLER DIAMETER		25-3/4"	65.41 cm	
TUMBLER DEPTH		24"	60.96 cm	
TUMBLER VOLUME PER POCKET		7-1/2 cu ft	212.38 L	
TUMBLER/DRIVE MOTOR PER POCKET		1/4 hp	0.19 kW	
BLOWER/FAN MOTOR PER POCKET		1/3 hp	0.25 kW	
DOOR OPENING (DIAMETER)		19-3/8"	49.21 cm	
DOOR SILL HEIGHT TOP POCKET / BOTTOM POCKET		49" / 13"	124.46 cm / 33.02 cm	
WATER CONNECTION		3/4"-11.5 NH (North America)		
		3/4" B.S.P.T. (Outside North America)		
DRYERS PER 20'/40' CONTAINER		42 / 84		
DRYERS PER 48'/53' TRUCK		96 / 108		
Gas	VOLTAGE AVAILABLE		120-240V 1ø 2w 50/60 Hz	
	APPROXIMATE NET WEIGHT		460 lb 208.65 kg	
	APPROXIMATE SHIPPING WEIGHT		485 lb 219.99 kg	
	AIRFLOW PER POCKET		60 Hz 230 cfm 6.51 cmm	
			50 Hz 191 cfm 5.40 cmm	
	HEAT INPUT PER POCKET		40,000 Btu/hr 10,080 kcal/hr	
	EXHAUST CONNECTION (DIAMETER) PER POCKET		4" 10.16 cm	
	COMPRESSED AIR CONNECTION		N / A	
	COMPRESSED AIR VOLUME		N / A	
	INLET PIPE CONNECTION PER POCKET		3/8" M.N.P.T.	
3/8" M.B.S.P.T. (CE and Australia Only)				
Electric	VOLTAGE AVAILABLE		200-416V 1,3ø 2,3,4w 50/60 Hz	
	APPROXIMATE NET WEIGHT		460 lb 208.65 kg	
	APPROXIMATE SHIPPING WEIGHT		485 lb 219.99 kg	
	AIRFLOW PER POCKET		60 Hz 230 cfm 6.51 cmm	
			50 Hz 191 cfm 5.40 cmm	
	EXHAUST CONNECTION (DIAMETER) PER POCKET		4" 10.16 cm	
	COMPRESSED AIR CONNECTION		N / A	
	COMPRESSED AIR VOLUME		N / A	
	OVEN SIZE PER POCKET			
		kW	Btu/hr	kcal/hr
		4.1	13,843	3,488
		5.0	17,065	4,300
		5.4	18,430	4,644
		5.6	19,112	4,816
		6.1	20,819	5,246
		6.5	22,184	5,590
	6.8	23,208	5,848	
	7.4	25,255	6,364	
	7.5	25,597	6,450	
	8.1	27,644	6,966	
Steam	VOLTAGE AVAILABLE		120-240V 1ø 2w 50/60 Hz	
	APPROXIMATE NET WEIGHT		476 lb 215.91 kg	
	APPROXIMATE SHIPPING WEIGHT		501 lb 227.25 kg	
	AIRFLOW PER POCKET		60 Hz 230 cfm 6.51 cmm	
			50 Hz 191 cfm 5.40 cmm	
	STEAM CONSUMPTION PER POCKET		45 lb/hr 20.41 kg/hr	
	OPERATING STEAM PRESSURE		150 psi max 10.34 bar	
	EXHAUST CONNECTION (DIAMETER) PER POCKET		4" 10.16 cm	
	COMPRESSED AIR CONNECTION		N / A	
	COMPRESSED AIR VOLUME		N / A	
	BOILER HORSEPOWER (NORMAL LOAD) PER POCKET		1.2 Bhp	
	SUPPLY CONNECTION PER POCKET		1/2" F.N.P.T.	
RETURN CONNECTION PER POCKET		1/2" F.N.P.T.		

Shaded areas are stated in metric equivalents

William McCollum 10/17/05

SL2020



88 Currant Road • Fall River, MA 02720
 Tel. 508-678-9000 • Fax 508-678-9447
 sales@amdry.com • www.amdry.com